

Land conveyed to The City of Cleveland Heights by deed dated January 25, 2001 and recorded in Auditor's File Number 200101250210 of Cuyahoga County Deed Records.
P.P.N. 687-08-004

Land conveyed to The City of Cleveland Heights by deed dated August 24, 2001 and recorded in Auditor's File Number 200108241093 of Cuyahoga County Deed Records.
P.P.N. 687-08-109

Land conveyed to The City of Cleveland Heights by deed dated August 15, 2001 and recorded in Auditor's File Number 200108150531 of Cuyahoga County Deed Records.
P.P.N. 687-08-110

Land conveyed to City of Cleveland Heights by deed dated December 17, 2001 and recorded in Auditor's File Number 200112170869 of Cuyahoga County Deed Records.
P.P.N. 687-08-111

L4	00.20	12.00	16'-M	0071.40	40.19	04.27	N33°11'03"W
C5	453.56'	289.73'	36°36'00"	150.00'	294.83'	294.83'	N74°14'10"W
C6	563.27'	336.18'	34°11'47"	173.26'	331.21'	331.21'	N51°51'59"W

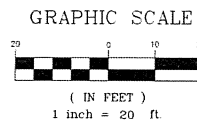
VACANT LAND ON LEE ROAD, TULLAMORE RD AND MEADOWBROOK BLV CITY OF CLEVELAND HEIGHTS COUNTY OF CUYAHOGA STATE OF OHIO

VERTICAL CONTROL MONUMENT AND T.B.M.

Official Benchmark Elevation: xxxxxx (NGVD 1929) - xxxxxx
T.B.M. No. 4 Elevation: 934.29' - Nail set in light pole on north side of drive apron fronting H.N. 3205
T.B.M. No. 5 Elevation: 935.00' - Nail set in light pole #545820 on corner of north side of Tullamore and entrance to parking garage.

LEGEND

Monument Box Found	Spot Elevation Top
Iron Pin or Pipe Found	Hydrant
5/8"-3/32" Iron Pin Set	Stand Pipe
Drill Hole Set / Found	Water Service Valve
P.K. Nail Set / Found	Water Line Valve
Gas Meter	Water Meter
Gas Manhole	Water Manhole
Gas Valve / Shut Off	Sanitary Manhole
Utility Pole with ID Number	Sanitary Manhole
Light Pole with ID Number	Sanitary Manhole
Traffic Pole	Sanitary Manhole
Ground Light	Sanitary Manhole
Guy Anchor & Line	Sanitary Manhole
Flag Pole	Sanitary Manhole
Electric Meter	Sanitary Manhole
Electric Manhole	Sanitary Manhole
Electric Box	Sanitary Manhole
Transformer	Sanitary Manhole
Air Conditioning Unit	Sanitary Manhole
Telephone Box / Manhole	Sanitary Manhole
Cable Box / Manhole	Sanitary Manhole
Traffic Control Box	Sanitary Manhole
Truncated Domes	Sanitary Manhole
Tree	Sanitary Manhole
Encroachments	Sanitary Manhole
Violations	Sanitary Manhole



TULLAMORE ROAD 50'
(A PUBLIC RIGHT-OF-WAY)

MEADOWBROOK ROAD 70'
(A PUBLIC RIGHT-OF-WAY)

**J.A. Wigmore CO.'s
Cedarbrook Allotment
Volume 59, Page 26 C.C.M.R.**

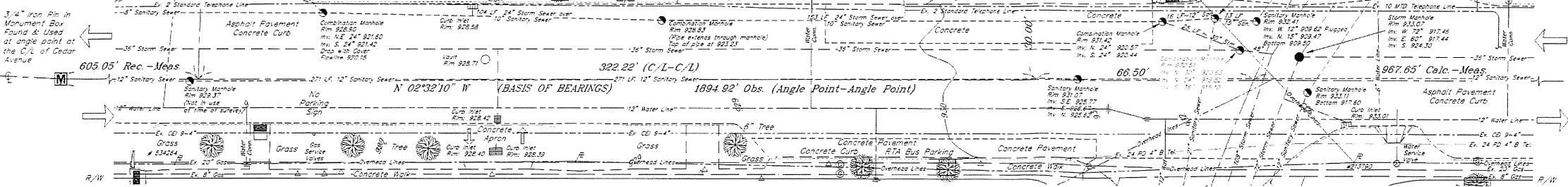
**J.A. Wigmore CO.'s
Cedarbrook Allotment #2
Volume 69, Page 18 C.C.M.R.**

**The Map of Survey and
Consolidation for the City of
Cleveland Heights, Ohio,
Volume 351, Page 20 of C.C.M.R.
Parcel "B"**

**"No buildings
existing on the
surveyed property"**
P.P.N. 687-08-001 thru 004
P.P.N. 687-08-109 thru 111

**5' Ohio Bell
Telephone Easement,
Volume 96-05760,
Page 27**

Dist. L.F. Size Type @ Grade



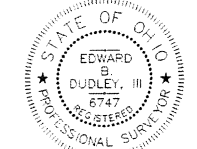
BASIS OF BEARINGS

The centerline of Lee Road as North 02°32'10" West in the Map of Survey and Consolidation for the City of Cleveland Heights, Ohio, Volume 351, Page 20 of Cuyahoga County Map Records.

LEE ROAD 60' (A PUBLIC RIGHT-OF-WAY)

APPARENT ENCROACHMENTS

E1 Adjacent asphalt pavement encroaches property 1.8 feet.



EDWARD B. DUDLEY, III
P.S. No. 6747

RIVERST
LAND SURVEYING - ENGINEER I
2310 SUPERIOR AVENUE - E
CLEVELAND - OHIO - 44115
PHONE: (216) 491-2000 FAX: (216) 491-2001
WWW.RIVERSTONE.SURVEY

Note: ● Denotes 5/8"x30" iron pins set and capped "Riverstone Company-Dudley PS6747"

