

Description Project:

Being a Clevelander and moving away was hard to adjust, I am returning back to the city and would like to open and established a young child day program in Cleveland Heights, Ohio.

I would like to establish a Young Infant/Young Toddler Childcare Program for parents who are in need of a quality center at the address of 2841 Noble Road Suite A.

The Childcare age range will be 6 weeks to 3 years of age.

The childcare day program would be licensed through the state of Ohio.

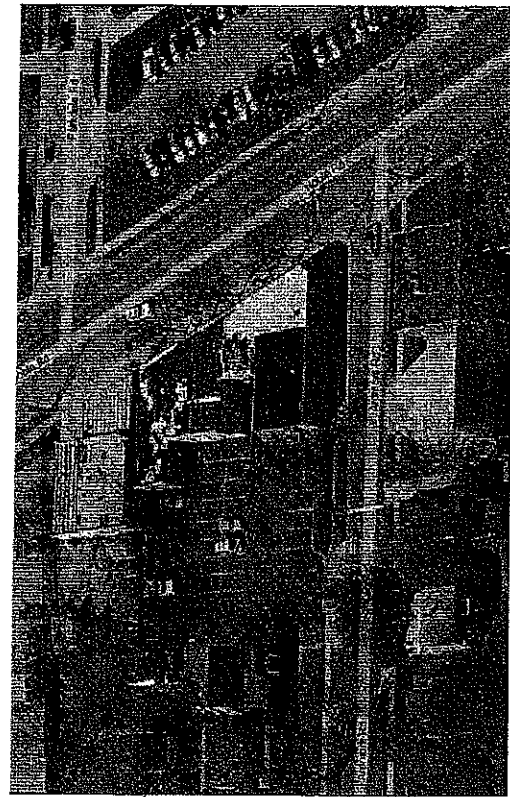
Hours of Operation:

6 a.m to 6 p.m

Monday through Friday

Lullaby Childcare specializes in catering to infants and young toddlers on an everyday basis

17-17  
PROJECT NO.



2841 Noble Road

**CODE SUMMARY**

GOVERNING BUILDING CODE: 2011 OHIO BUILDING CODE (OBC), BASED ON INTERNATIONAL BUILDING CODE 2009 (IBC), OHIO FIRE CODE 2011.

USE GROUP: BUSINESS B.

TYPE OF CONSTRUCTION: TYPE III-B, TABLE 503, SECTION 602.

ALLOWABLE AREA PER TYPE III-B: PER SECTION 503.1.1,

TENANT AREA: 2,300 SF

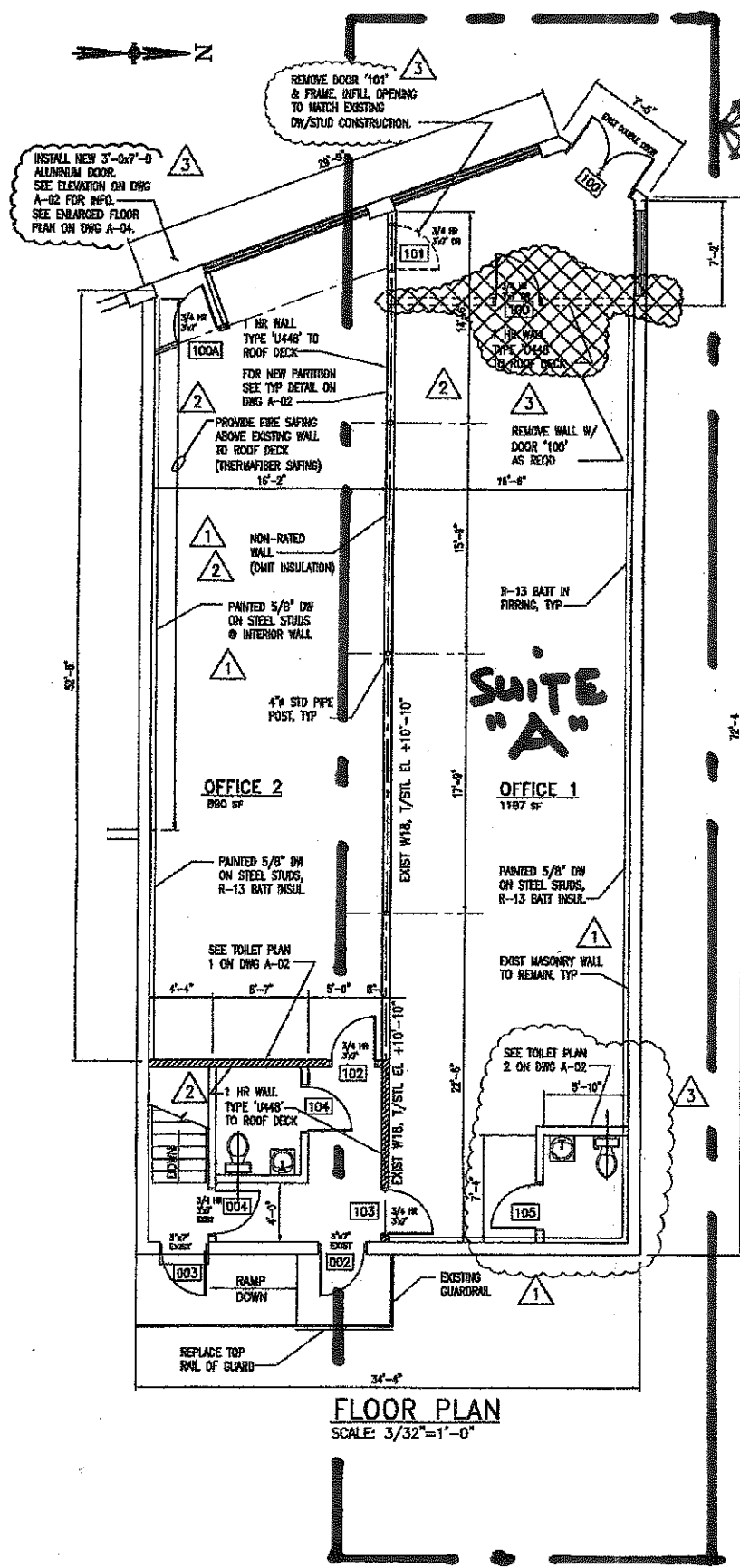
ALLOWABLE HEIGHT: PER SECTION 503.1.1,

EXISTING HEIGHT: 1 STORY, 14'-0"± AVERAGE HEIGHT

FIRE SEPARATIONS IN HOURS: 1 HR TENANT SEPARATION.

FIRE RESISTANCE FOR BUILDING ELEMENTS: STRUCTURAL FRAME - 0 HR; BEARING WALLS EXTERIOR - 0 HR; BEARING WALLS INTERIOR - 1 HR; ROOF CONSTRUCTION - 0 HR.

BASEMENT IS TO BE UNOCCUPIED, AND IS NOT TO BE USED FOR ANY STORAGE.



**FLOOR PLAN**  
SCALE: 3/32"=1'-0"

**PROPOSED LULLABY CHILD CARE - SUITE 'A'**  
ADDRESS: 2841 Noble Rd.  
CLEVE HTS, OHIO

**DRAWING INDEX**

DWG	DESCRIPTION
A-01	FLOOR PLAN, CODE SUMMARY AND DRAWING INDEX
A-02	CEILING PLAN AND TYPICAL DETAILS
A-03	BASEMENT PLAN
E-01	ELECTRICAL PLAN AND NOTES
P-01	MECHANICAL PLAN AND NOTES

**DOOR SCHEDULE**

DOOR NUMBER	QTY	SIZE		MATERIAL	TYPE	CLASS	LEVER		MATERIAL	TYPE	FRAME		DETAIL	AUTO DOOR CLOSER	ANSI LOCK TYPE	REMARKS
		W	H				W	H			JAMB	HEAD				
100	1	3'-0"	7'-0"	1/2" MIN. METAL STUDS, 24" C/C	F	1			1/2" MIN. METAL STUDS, 24" C/C	F						"SL" ON DEAD BOLT
101	1	3'-0"	7'-0"	1/2" MIN. METAL STUDS, 24" C/C	F	1			1/2" MIN. METAL STUDS, 24" C/C	F						"SL" ON DEAD BOLT
102	1	3'-0"	7'-0"	1/2" MIN. METAL STUDS, 24" C/C	F	1			1/2" MIN. METAL STUDS, 24" C/C	F						"SL" ON DEAD BOLT
103	1	3'-0"	7'-0"	1/2" MIN. METAL STUDS, 24" C/C	F	1			1/2" MIN. METAL STUDS, 24" C/C	F						"SL" ON DEAD BOLT
104	1	3'-0"	7'-0"	1/2" MIN. METAL STUDS, 24" C/C	F	1			1/2" MIN. METAL STUDS, 24" C/C	F						"SL" ON DEAD BOLT
105	1	3'-0"	7'-0"	1/2" MIN. METAL STUDS, 24" C/C	F	1			1/2" MIN. METAL STUDS, 24" C/C	F						"SL" ON DEAD BOLT

**HARDWARE NOTES**

- ALL HARDWARE TO BE COMPLIANT WITH ADAMS.
- LOCKS TO BE MORTISE TYPE.
- PROVIDE LOCKS WITH "BEST" LOCK CYLINDERS.
- PROVIDE DOOR LOCK FUNCTIONS AS NOTED IN SCHEDULE.
- PROVIDE ADAMS COMPLIANT LEVERS ON DOORS THAT LATCH.
- HOLLOW METAL DOORS AND FRAMES SHALL COMPLY WITH 50-100, LEVEL 3.
- ALL EXCESS DOORS TO BE READILY OPENABLE FROM EXTERIOR SIDE WITHOUT USE OF A KEY, SPECIAL KNOWLEDGE OR EFFORT.
- HARDWARE TO MEET BRMA STANDARDS.
- PROVIDE ALL NECESSARY ANCHORS, BRACKETS, AND FRAMING REQUIRED TO INSTALL AND SECURE DOORS.
- ALL REVED DOORS TO HAVE CLOSERS.
- ALL EXIT DOORS TO HAVE SINGLE LEVER (SL) OPERAL.

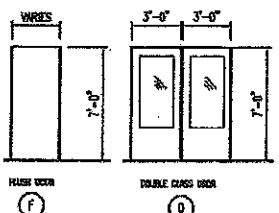
**ANSI LOCK TYPES**

- R04 ENTRY LOCK - LATCHBOLT OPERATED FROM EITHER SIDE EXCEPT WHEN OUTSIDE LEVER HANDLE IS MADE OPERATIVE BY A STOP OR MECHANICAL MEANS OTHER THAN KEY. WHEN OUTSIDE LOCK IS LOCKED, LATCHBOLT MAY BE RETRACTED BY KEY FROM THE OUTSIDE OR BY ROTATING INSIDE LEVER HANDLE.
- P/P PRIVACY LOCK, LEVER HANDLE (ADA).

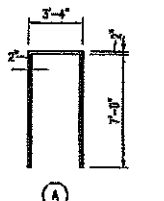
**FINISHES**

	FLOORING	BASE	WALLS	CEILING	HT
OFFICES	CARPET	4" VHM	PAINTED	ACEL	8'-0"
HALL	VCT	DO	DO	DO	8'-0"
RESTROOM	VCT	DO	DO	DO	8'-4"

ALL FINISHES TO BE CLASS B.3 OR BETTER. CARPET TO COMPLY WITH DOC "FILL TEST" FF-1. VCT & VHM BASE TO BE CLASS 1. FM DOORS AND FRAMES TO BE PAINTED.



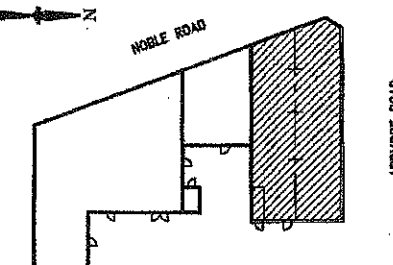
**DOOR TYPES**



**FRAME TYPES**

FOR ALL PARTITIONS FRAME OPENINGS USE DESIGN NO. "1413" NONBEARING WALL RATING - 1HR - 3 1/2" WIDE METAL STUDS, 24" C/C MAX. - 1/2" THICK Gypsum BOARD

NOTE: ANY ENVIRONMENTAL WORK, IF ANY, WILL BE COMPLETED PRIOR TO CONSTRUCTION, UNDER A SEPARATE CONTRACT.



**KEY PLAN**  
SCALE: 1/8"=1'-0"

*Delia Gross*  
1/29/13

EXPIRES 12/31/13

REISSUED FOR PERMIT  
January 26, 2013

**ISSUES**

REVISION	DATE
REVISION 1	11/20/12
REVISION 2	12/10/12
REVISION 3	12/17/12

2841 Noble Road, Cleveland HTS, OHIO

DRAWN: MF  
CHECKED: DG  
DATE: 1-03-13  
APPD:

A-01

17-17  
PROJECT NO.