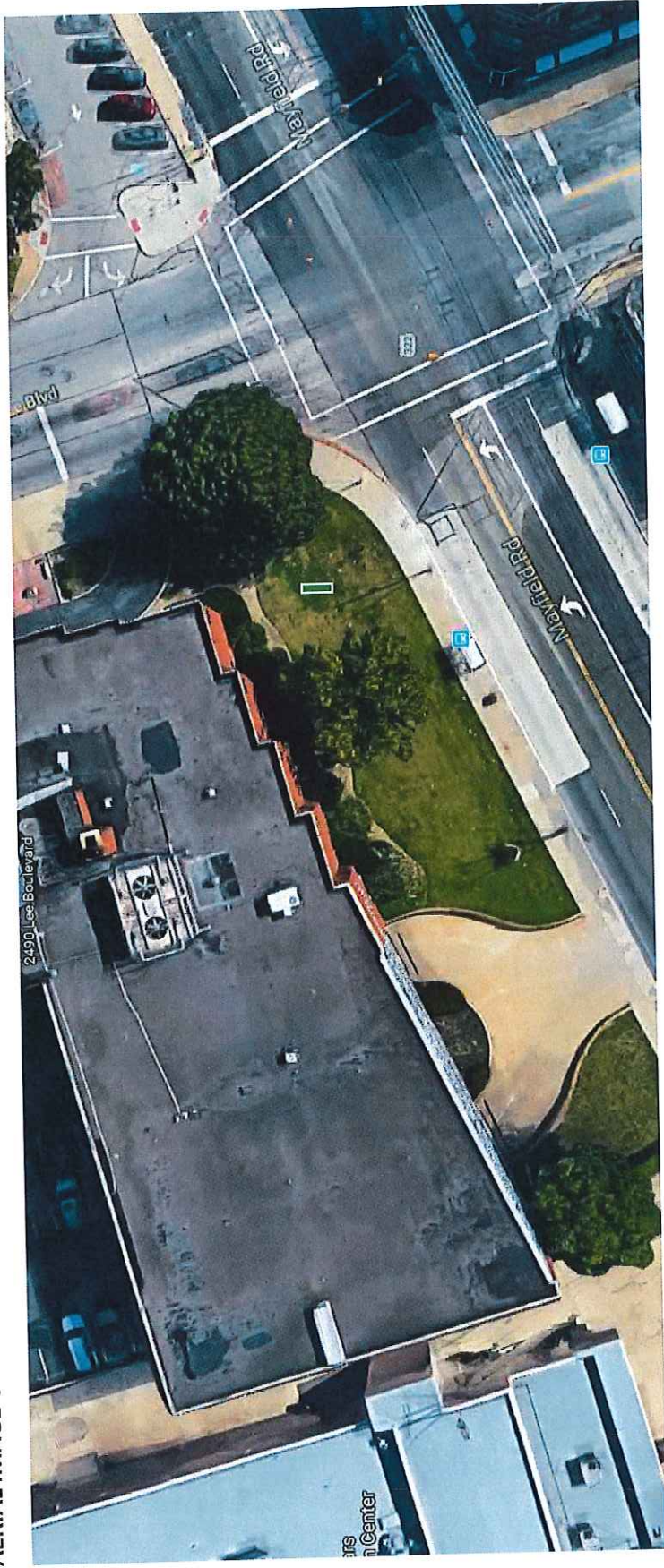
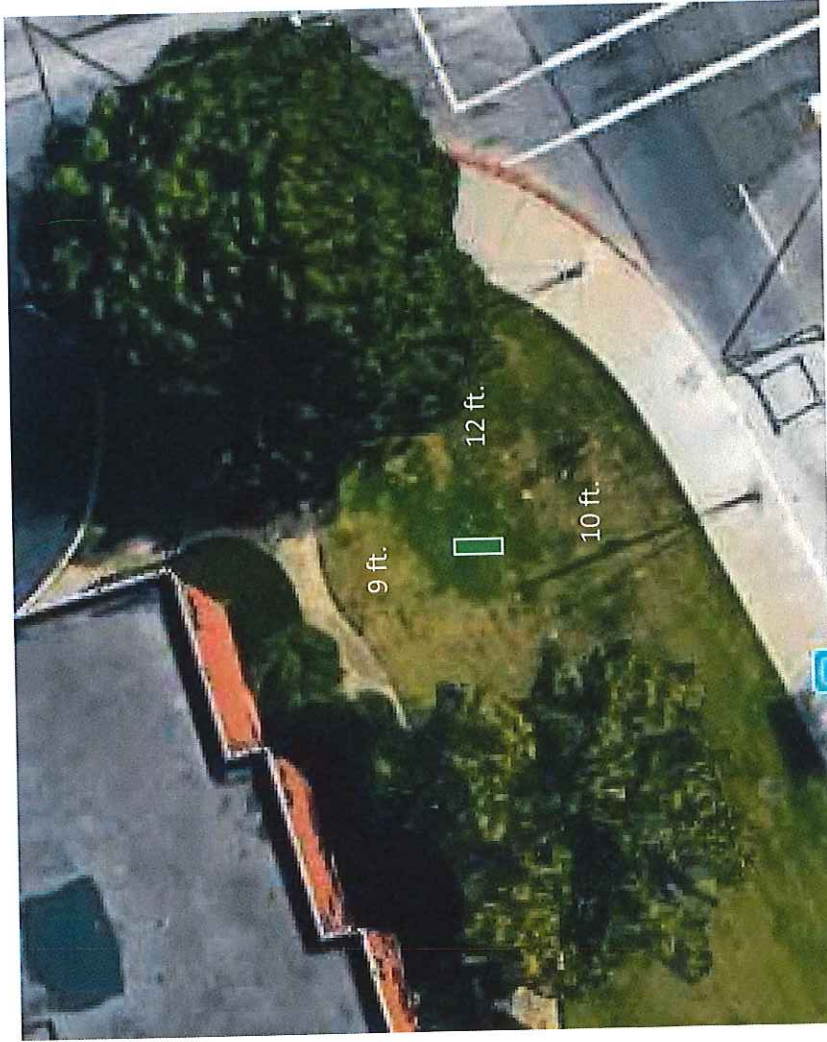


AERIAL IMAGE OF SIGN LOCATION



## INSTALLATION LOCATION MEASUREMENTS



Mayfield Road to Building = 23 ft.; Mayfield Road to Sign = 10 ft.; Building to Sign = 9 ft.

Lee Boulevard to Sign = 12 ft.

Angle = True North/South

Sign Height = 6ft



2490 Lee Boulevard, Cleveland Heights (Cuyahoga County)  
Permanent Parcel # 681-39-004  
4x4 Double-Sided Sign to be installed in the area indicated below and set back per city regulations.

**SITE PLAN/SIGN LOCATION**



**COMING  
SOON!**



# ROCKEFELLER POINT TECHNOLOGY CENTER

**Available  
For Lease**

- 10 Gbps Fiber Optic Network
- Updated Lobby
- Secure Building Access

**Dan Catalano**

**216.861.5411**

**HannaCRE.com**